

**GOODYEAR**  
ROAD THERAPY

# **GOODYEAR**

## **EfficientGrip SUV**

with **QuietTred** TECHNOLOGY



Free\* tire replacement  
in case it gets damaged  
by nasty road hazards.  
\*Terms & conditions apply.

**RANGE: LUX**

**MAIN FEATURE: COMES WITH QUIETTRED TECHNOLOGY FOR QUIET COMFORT**

**BENEFITS:**

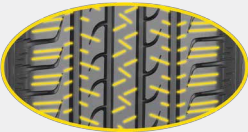


**QUIET COMFORT**  
**QUIETTRED TECHNOLOGY**

Advanced tread and carcass design provides improved noise performances as the tire wears for a quieter, more comfortable ride

**静音胎面科技**

先进的胎面及胎体设计，确保在轮胎的使用寿命内，始终给您舒适静音的驾乘体验



**WET/DRY PERFORMANCE**  
**HIGH GRIP DESIGN**

High number of biting edges offers greater blade density for superior braking and better control in wet driving conditions

**强抓地设计**

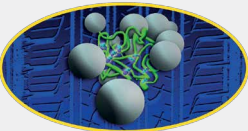
更高的刀槽密度增加胎面的咬合边，提高湿地刹车和操控性能



**WET/DRY PERFORMANCE**  
**RESPONSIVE TREAD AND CARCASS DESIGN**

Responsive structure that reacts to driver steering for crisp handling behaviour

**敏锐的胎面和胎体设计**  
对驾驶员转向敏锐的结构，使驾驶操控干净利落



**FUEL ECONOMY**  
**FUEL EFFICIENT CONSTRUCTION**

High loaded silica blend compound reduces intra-molecular friction for a measurable reduction in fuel consumption

**降低油耗**

高密度硅胶配方能够减少内部分子间的摩擦，从而降低一定量的油耗

**AVAILABLE SIZES:**

Size	Car Fitments
225/60 R17 99V	Hyundai Tucson, Subaru Outlander
225/65 R17 102H	Honda CR-V, Mazda CX5
235/65 R17 108H XL	Honda CRV (NEW), Volvo XC60
225/60 R18 100H	Honda CRV 2.4L, Subaru Outback, Lexus NX 200t, Lexus NX 300h
235/60 R18 107V XL	Hyundai Sante Fe, Hyundai Sorento, Audi Q5, Lexus RX300
255/55 R18 109V XL	Porsche Cayenne, Volkswagen Touareg, BMW X5
235/55 R19 105V	Hyundai Santa Fe 2.4L, Lexus RX350, Audi Q5
275/40 R20 102V	Land Rover Range Rover Sport