



NEW

EAGLE F1 ASYMMETRIC 5

EMPOWER YOUR DRIVE

with ACTIVE BRAKING TECHNOLOGY



**Braking
Performance**



**Handling
Performance**



**Comfort
Performance**

Based on internal data (225/45R17 91Y, Golf 7 GTI, test track: Goodyear Proving Ground). Eagle F1 Asymmetric 5 and Active Braking Technology are trademarks of Goodyear.

GOODYEAR



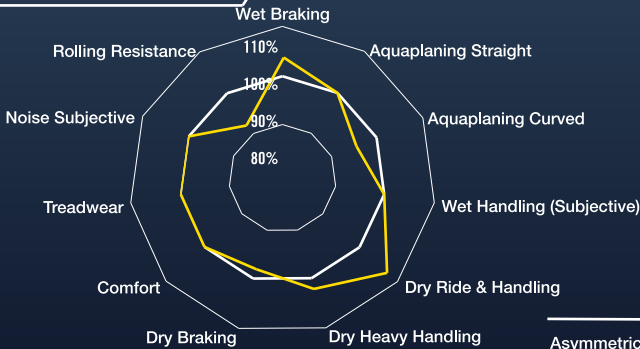
EAGLE® F1 ASYMMETRIC 5

SUPERIOR BRAKING PERFORMANCE ON WET AND DRY ROADS

The Eagle F1 Asymmetric 5 is designed with 3 key technologies to provide luxurious comfort with superior braking performance on wet and dry roads



TEST RESULT



* Based on internal data (225/45R17 91Y, Golf 7 GTI, test track: Goodyear Proving Ground)

AVAILABLE SIZE

225/45R17 94Y
245/40R17 95Y
225/35R18 87W
225/40R18 92Y
225/45R18 95Y
235/40R18 95Y
235/45R18 98Y
235/50R18 101Y

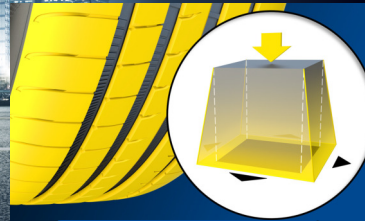
245/40R18 97Y
245/45R18 100Y
255/35R18 94Y
255/45R18 103Y
265/35R18 97Y
275/35R18 99Y
225/35R19 88Y
225/45R19 96W

235/35R19 91Y
245/35R19 93Y
245/40R19 98Y
245/45R19 102Y
255/30R19 91Y
255/35R19 96Y
255/40R19 100Y
275/35R19 100Y

285/30R19 98Y
255/40R20 101Y
265/35R20 99Y
285/30R20 105Y
295/35R20 105Y



With highly refined compound with extra silica load that delivers shorter braking distance on wet and dry roads



Achieving shorter braking distances on dry and wet road with ActiveBraking technology that increases the contact area with the road when braking



Designed with Power Cushion Technology, the tire has stiffer coupling of the tire carcass and tread pattern to achieve excellent handling on dry roads